

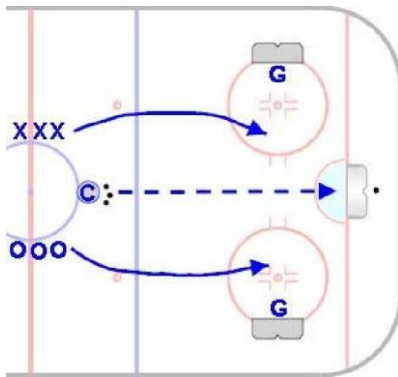
3 on 3 Score Anywhere

All Ages

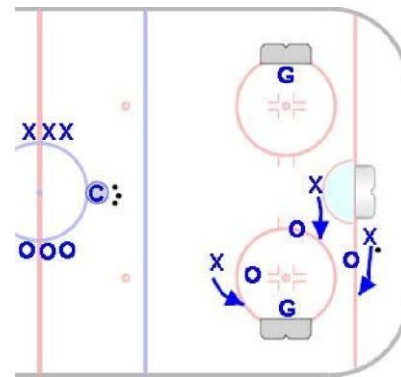
Goal: To simulate transition and offensive attack situations that allow players to think creatively and will teach them to “see the ice” better.

Time: 8 to 12 minutes

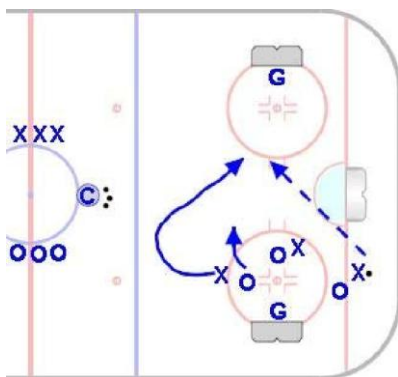
Shifts: 30 to 45 seconds



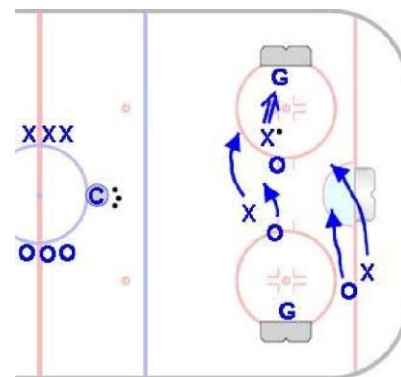
- Nets are placed on face-off circles.
- Play begins when coach dumps puck in. Three players from each team enter play.
- Players can score to either net.



- The team possessing the puck can choose to attack either net.
- Players will need to transition from offense to defense quickly on turnovers, as they may be defending the net they were just attacking.



- Play must stay within the blue line. Players should use the entire available ice surface.
- Attack should frequently change directions, with players looking to create odd-man situations and potential breakaways.



- All rebounds are live. Goaltenders should move to cover the puck quickly, as six players will attack for each rebound.
- Players must respect the goaltender and avoid actions that could injure them.