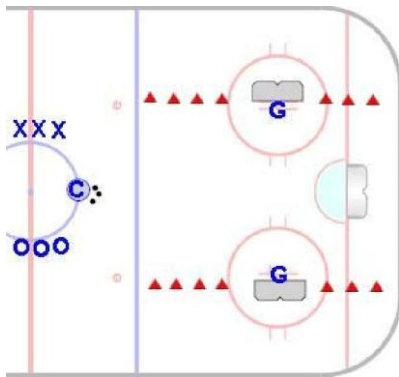


# 2 on 2 In the Box

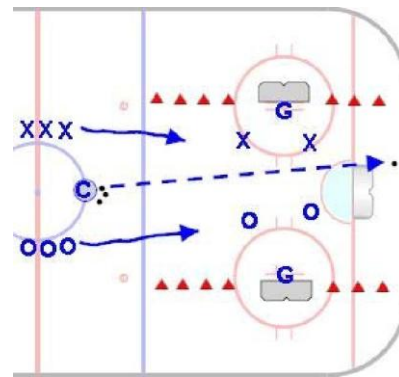
All Ages

**Goal:** To simulate a game situation in which players must work to find openings and create passing opportunities and become comfortable handling the puck in a small area while under constant pressure.

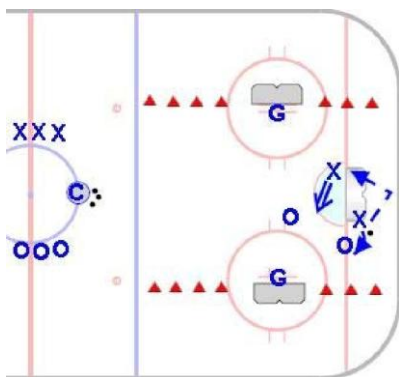
**Time:** 8 to 10 minutes      **Shifts:** 25 to 40 seconds



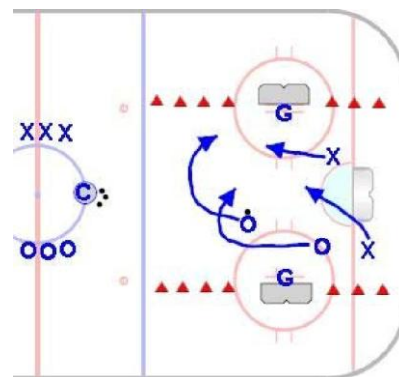
- Nets are placed on the face-off dots
- Cones are placed along the imaginary goal lines.
- The puck cannot go past goal lines.



- Coach shoots puck into zone and two players from each team enter the play.
- If the puck is shot or skated below the imaginary goal lines, the coach calls "new puck" and shoots a puck into play.



- Players controlling the puck must constantly move, using crossovers and lateral movement, to find open ice and create shots.
- Players must support the puck carrier and position themselves to receive the puck.



- Upon recovering the rebound or turnover, play moves in the other direction.
- A typical game will see numerous turnovers and calls for new pucks as well as many quality scoring opportunities.